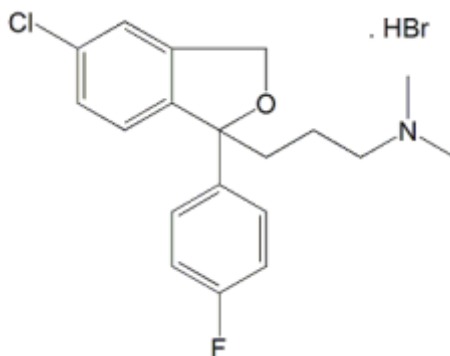


Citalopram Related Compound G



Citalopram Related Compound G

Synonyms : Citalopram EP Impurity E, Citalopram Related Compound G

CAS No : NA

Molecular Formula : C₁₉H₂₂BrClFNO

Molecular Weight : 414.74

Chemical Name : 1-(4'-Fluorophenyl)-1-(3-dimethylaminopropyl)-5-chlorophthalane hydrobromide

Sai Traders

FF-4, Limbani Complex, Nr. Gormoh Hotel, Iscon-Bopal Road, Ambli, Ahmedabad -380058, India.

Mobile : +91 9227808809 , +91 8866555288 , <http://saitraders.co.in>